

- 5. Always lift the load slowly. Make sure the area is clear when moving the material. All bystanders must be kept at a safe distance.
- 6. Do not lift loads higher than necessary. 3 ft (0.9 m) maximum lifting height recommended (Fig. 1-9). Never leave a suspended load unattended. Always lower the load to the ground when not in use.



Fig. 1-9

- 7. Never release the vacuum while the load is being lifted. Make sure the material is properly supported before releasing the vacuum.
- 8. To release vacuum from the pad, hold the switch in the "Vacuum Release" position for 3-5 seconds. Green light next to the switch will light up and alarm will sound (Fig. 1-10). Once vacuum gauge reads "0" the pad can be removed from the object it was lifting (Fig. 1-11, 1).



Fig. 1-10

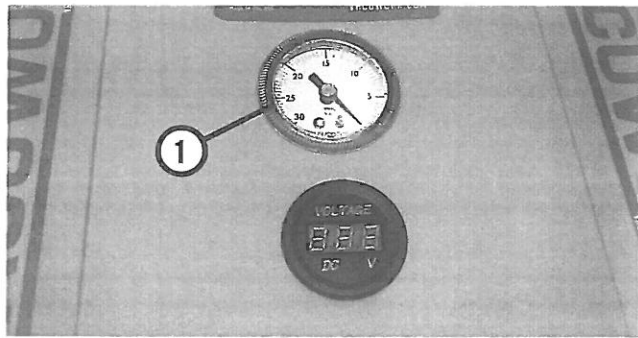


Fig. 1-11

PADS

TROUBLESHOOTING

PAD SEAL WILL NOT STAY IN THE SEAL CHANNEL

- 1. Make sure 50% of the pad seal is installed in the channel. This will leave 1" of the pad seal outside of the channel. Use the seal tool, part number PT3002-000A, to install the pad seal.
- 2. Make sure the vacuum pad is positioned properly before lowering pad onto material. It is best to be as centered as possible. This will prevent the seal from rolling out.
- 3. To avoid pulling the pad seal from the channel, wait 2 to 3 seconds after releasing the material before moving to the next piece.

REPLACE THE PAD SEAL

- 1. Use PT3000-600A Tough Seal™, 10 ft (3 m).
- 2. Remove the vacuum pad from the host machine and disconnect the vacuum hose from the unit.
- 3. Position the vacuum pad upside down, preferably 3 ft (0.9 m) above the ground or at a safe ergonomic height (Fig. 2-1).

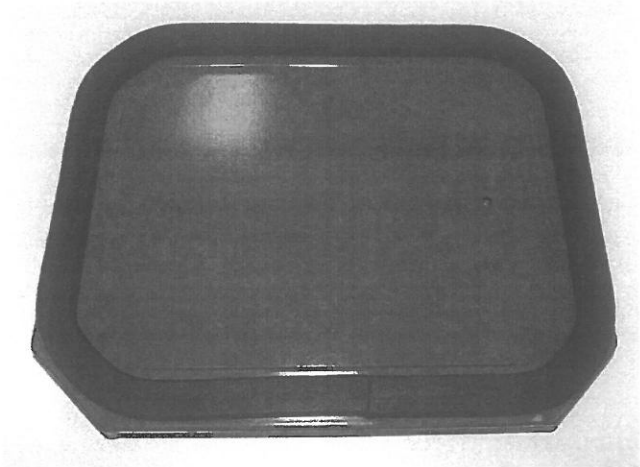


Fig. 2-1

- 4. Remove the old seal from the pad, or remove the damaged portion of the pad seal that is being replaced.
- 5. Measure the channel to determine the length of pad seal you will need.

- 6. Make sure adjoining ends are smooth and square. hacksaw blade is recommended to cut the ends square where needed.

NOTE: Do not use any adhesive to adhere the pad seal into the channel. If the pad seal is glued into the channel it will be almost impossible to remove when future replacement is needed.



Fig. 2-2

- 7. Hold down one side of the pad seal while pushing the other side into the vacuum pad channel with the seal tool provided. Continue pressing the pad seal into channel every few inches as you work your way around the pad (Fig. 2-2).
- 8. Without stretching the pad seal, continue pressing pad seal into the channel.
- 9. Go around the vacuum pad, pushing the pad seal into the channel approximately 50% on both sides until it is squarely seated in the channel (Fig. 2-3).

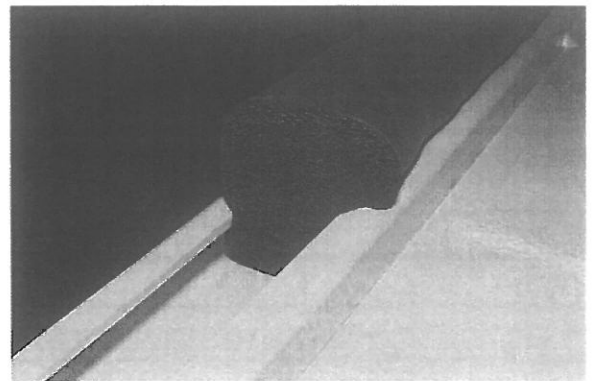


Fig. 2-3

10. Press the pad seal in until the back end is about 4 in. (100 mm) from the front end. Overlap the ends approximately 1/4 in. (6 mm). Cut the excess material off while squaring the end.
11. Apply pad seal adhesive to the ends and allow 1 – 2 minutes for the adhesive to set before joining them together (Fig. 2-4).
12. Join the ends together then install the pad seal into the channel using the seal tool. Use caution to avoid getting any adhesive in the channel.



Fig. 2-4

ATTACHING PAD

1. Connect the quick connect hose from the pad to the side of the unit (Fig. 1-4).

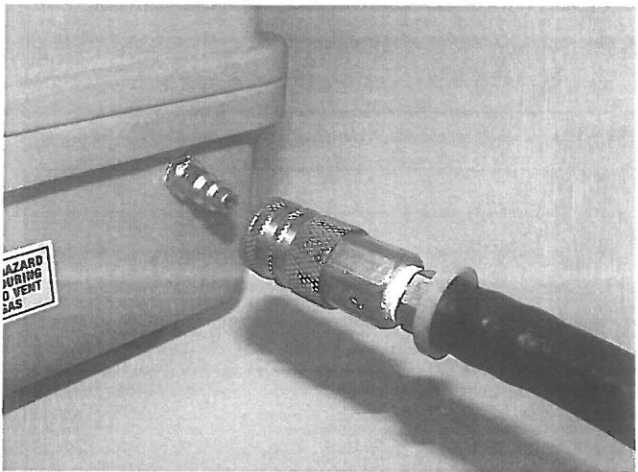


Fig. 1-4

2. Attach the pad to the host machine using the clevis hook supplied (Fig. 1-5)

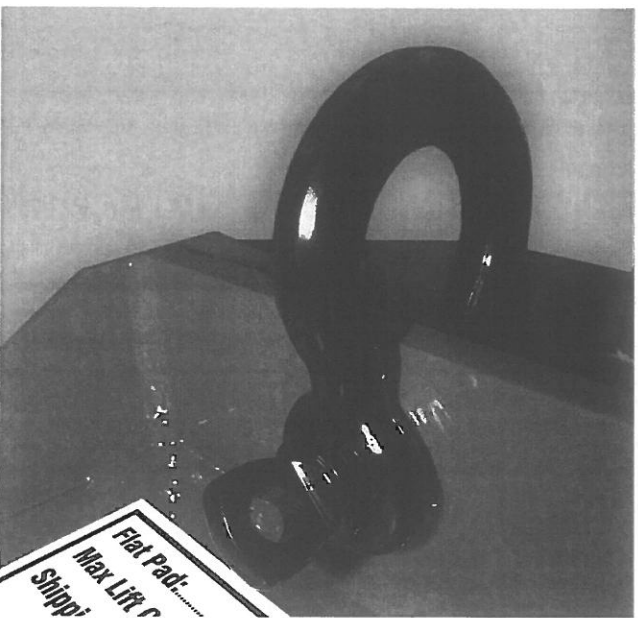


Fig. 1-5

LIFTING MATERIALS

1. Before initiating lift, brush/sweep off any debris from lifting surface.

2. Do not operate until the vacuum pad is properly positioned on the material. Lift the material as close to the center as possible to keep the load balanced.
3. Turn switch to the "Vacuum On" position to initiate lift (Fig. 1-6) (slight pressure may be needed on the pad to create seal).



Fig. 1-6

4. Refer to the lift capacity chart on the pad to determine how much vacuum is needed to safely perform the lift (Fig. 1-7). Once the required vacuum level is reached on the vacuum gauge, lift can be performed (Fig. 1-8, 1).

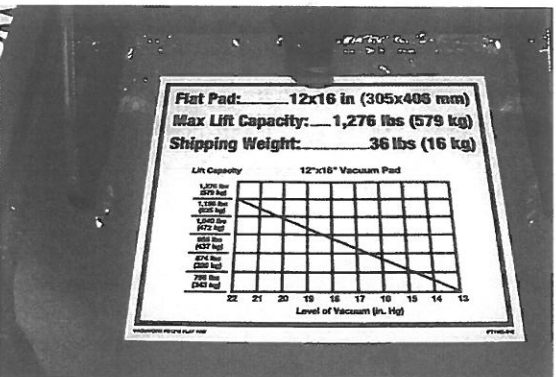


Fig. 1-7

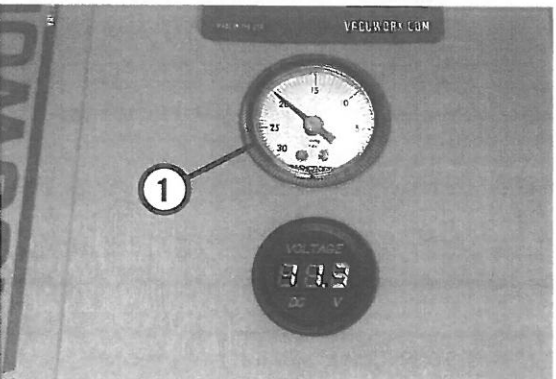


Fig. 1-8

OPERATION

OPERATING TIPS

The following information does not include all conditions that may be encountered in standard operations. Contact your Vacuworx representative for additional training information.

DO NOT USE UNSAFE EQUIPMENT

Do not operate a vacuum lifting system with unapproved or missing parts, or if it is damaged or malfunctioning. Correct any problems before operating equipment.

NOTE: Do not make alterations or modifications to the vacuum lifting system.

Always inspect the lifting pad and pad seal for any damage prior to each daily use.

KEEP PERSONNEL AWAY

Keep personnel a safe distance away from the load when lifting.

**WARNING**

FALL OR CRUSH HAZARD

- NEVER lift or swing load above people or objects.



CHARGING

1. Before use, check to make sure the unit is charged. The PS 1 is powered by a 12 volt rechargeable battery with 8 hours approximate run time.

NOTE: Do not fully discharge battery. This may cause premature battery failure.

2. To charge, plug the charging unit (Fig. 1-1) into the charging port on the side of the box (Fig. 1-2, 1).



Fig. 1-1



Fig. 1-2

3. Always open box when charging (Fig. 1-2). Green light inside box indicates battery is charging (Fig. 1-3, 1). Battery requires 8 hours to fully charge.

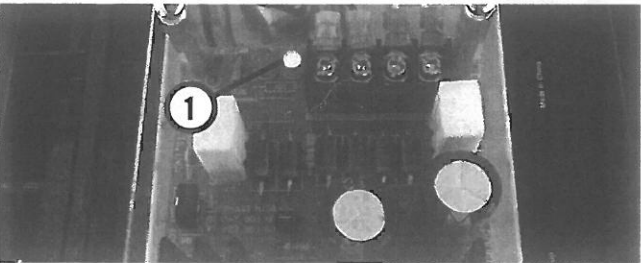


Fig. 1-3

Subject to the terms and conditions set forth herein, Company provides this Limited Warranty to only the person or entity that originally purchased the Company's parts, and/or equipment (the "Products" and/or "Equipment") from Company or its authorized reseller or distributor (the "Original Purchaser") for Products and/or Equipment purchased and delivered throughout the world. For purposes of this Limited Warranty, the term "Original Purchaser" includes (i) new and unused Proc or Equipment sold by the Company directly to a third party purchaser, and (ii) new and unused Products and/or Equipment sold by an authorized Company distrib reseller to third party purchasers.

1. **Limited Warranty.** Company warrants to the Original Purchaser the Product and/or Equipment purchased will be free from defects in materials, workmanship labor and parts for a period of 90 days, beginning on the date the Product or Equipment is delivered to an Original Purchaser. The Original Purchaser is responsible for completing the Warranty Registration Card upon purchase and promptly returning it to the Company. The Limited Warranty only applies to defects that occur during use of the Product or Equipment within the limited warranty period set forth above. Warranty coverage is limited to the replacement or repair, at the sole discretion of the Company, of parts deemed by Company to be defective in materials or workmanship.

2. **Procedure for Submitting Claims.** It is the Original Purchaser's responsibility to contact Company regarding any warranty issues within the limited warranty period. To present evidence of the warranty start date, and to obtain a Return Goods Authorization (RGA) from the Company within fifteen (15) days of any occurrence. All warranty returns must be accompanied by an RGA. Any Product or Equipment being returned for warranty consideration must be shipped freight prepaid to the Company. Failure to follow the above procedures for any potential warranty claim waives the protection provided by this Limited Warranty and relieves Company of any obligation under the Limited Warranty.

3. **Exclusions from Limited Warranty.** This Limited Warranty is applicable only to new Products and Equipment sold to an Original Purchaser that have not been altered, modified or changed in any manner or way, unless the new Product or Equipment was altered, modified or changed with the express written permission of Company.

A. This Limited Warranty does not cover: (a) Products and Equipment that, in Company's judgment, have been subjected to abuse, alteration, modification, tampering, negligence, misuse, lack of reasonable care, accident, or other external causes, including but not limited to fire, flood, weather or condensation; (b) Products and Equipment that have had serial numbers altered, tampered with, defaced or removed; (c) Products and Equipment that have been subjected to improper or incomplete maintenance or repair; or (d) Products and Equipment that have been damaged as a result of a failure to maintain or use the Product or Equipment in accordance with the instructions in the Operator's Manual issued to the Original Purchaser.

4. **Disclaimers.** EXCEPT FOR THE LIMITED WARRANTY SPECIFIED HEREIN, THE PRODUCTS AND EQUIPMENT ARE PROVIDED "AS IS" WITHOUT ANY OTHER WARRANTY OF ANY KIND WHATSOEVER INCLUDING, WITHOUT LIMITATION, ANY WARRANTY OF MERCHANTABILITY AND FITNESS FOR A PARTICULAR PURPOSE. IF ANY IMPLIED WARRANTY IS DISCLAIMED IN ANY STATE OR TERRITORY WHERE PRODUCTS AND EQUIPMENT ARE SOLD, THE DURATION OF SUCH AN IMPLIED WARRANTY SHALL BE LIMITED TO THE EXPRESSLY COVERED UNDER THE LIMITED WARRANTY PROVIDED HEREIN.

5. **Limitation of Liability.** TO THE MAXIMUM EXTENT PERMITTED BY LAW, COMPANY IS NOT LIABLE UNDER ANY CONTRACT, TORT, NEGLIGENCE, STRICT LIABILITY, OR ANY OTHER LEGAL OR EQUITABLE THEORY FOR ANY LOST PROFITS, LOSS OF USE OF THE PRODUCTS OR EQUIPMENT, INCONVENIENCE OR DAMAGES, WHETHER DIRECT, INCIDENTAL, PUNITIVE, EXEMPLARY OR CONSEQUENTIAL, RESULTING FROM THE USE OF THE PRODUCTS OR EQUIPMENT, RELATING TO WARRANTY SERVICE, OR IN CONNECTION WITH ANY BREACH OF THIS LIMITED WARRANTY. To the extent any state or territory does not allow exclusions or limitations to incidental or consequential damages of the aforementioned damages, then the specific provisions of this Limited Warranty that conflict with such laws shall be deemed modified only to the extent necessary to resolve such conflict; provided, however, such modification shall be made only if a court of competent jurisdiction deems such provisions of this Limited Warranty conflict with such laws. This Limited Warranty provides specific legal rights, and you may also have other rights that vary from state to state.

6. **Modifications to Products and Limited Warranty.** In keeping with our policy to improve our Products and Equipment, Company reserves the right to make changes in design and materials at any time without incurring obligation to the Original Purchaser. In addition, Company reserves the right to revise, amend, or modify this Limited Warranty at any time, without notice.

7. **Notices.** All notices and other communications by Original Purchasers to Company shall be made to the Company through its contact information listed below:

Vacuworx Global, LLC
10105 E. 55th Place
Tulsa, Oklahoma 74146
Phone: (918) 259-3050
Fax: (918) 259-3055

8. **Governing Law.** This Limited Warranty shall be governed by the laws of the State of Oklahoma.

9. **Severability.** The invalidity or unenforceability of any provision of this Limited Warranty shall in no way affect the validity or enforceability of any other provision of this Limited Warranty. In the event any provision hereof conflicts with any applicable law, such provision shall be deemed modified, consistent with the aforementioned intent, only to the extent necessary to resolve such conflict.

10. **Transfer.** This Limited Warranty is not assignable or otherwise transferrable by Original Purchaser without express written consent of Company.

11. **No Distributor Warranty.** Any distributor or reseller of Company's Products or Equipment makes no warranty of its own and any distributor or reseller has no obligation to make any representation or promise on behalf of the Company, or to modify the terms or limitations of this Limited Warranty in any way.

12. **Misuse or Modification of Equipment:** Any tampering, modification, misuse or negligence in handling or use of Equipment renders the warranty void. Further, this warranty is void if, at any time, any internal changes are made or attempted to be made to any of the components of the Equipment, or if at any time the serial number is removed or defaced. OPERATION OF THE EQUIPMENT THAT RENDER THIS WARRANTY VOID WILL BE DEFINED TO INCLUDE ALL OF THE POSSIBILITIES DESCRIBED IN THIS PARAGRAPH, TOGETHER WITH ANY PRACTICE WHICH RESULTS IN CONDITIONS EXCEEDING THE DESIGN TOLERANCE OF THE EQUIPMENT.



10105 East 55th Place
Tulsa, Oklahoma 74146 USA
+1-918-259-3050
requests@vacuworx.com
vacuworx.com

PT1102-304 06/16
COPYRIGHT © 2016 VACUWORX®

VACUWORX

VACUWORX.COM



PS 1

OPERATORS GUIDE

PATENT PEN
ISO STANDARD 90